



# The RWT Charity Newsletter

## Welcome to the latest edition of our newsletter and Happy New Year to all our amazing supporters!

The mission of the charity is to make a real difference to our patients, their families and the staff who treat them. Charitable funds are used to provide additional resources that the NHS cannot provide. They are utilised in a timely manner to ensure that they are applied in the areas that they are needed most.

As ever, we could not achieve what we do without our many supporters and the tireless work of fundraisers, both in the hospital and in our surrounding community and businesses. We are very grateful to these people, who have kindly given their time, effort and generosity.



Making a real difference to the lives of our patients, their families and staff.

## Winter 2021



# Moment of Magic update

In December, we launched our 'Moment of Magic' appeal to ask for your support over the 2020 festive period.

You supported us by engaging with our RWT Winter Fair fundraising activities and purchasing presents for our patients from our Amazon wish lists. Some of you made a donation direct to our JustGiving campaign to say thank you for recent care of

yourself or a loved one, or to show our frontline staff that you were thinking of them.

We are pleased to confirm that the total raised on our JustGiving campaign page is £1,696 including Gift Aid!

Thank you to all who made a contribution and helped to fundraise. You have helped us to provide 'Moments of Magic' for our patients, their families and staff throughout

the festive season and into 2021.



Some of our members of staff from the General Office who made a donation to wear their festive outfits for the appeal.

## A Thank You to Captain Sir Tom Moore

We want to say how deeply saddened the Charity Team and wider Trust were to hear of the passing of Captain Sir Tom Moore, who died recently aged 100.

'Captain Tom' first came in the public eye in 2020, having originally set out to raise £1000 for the NHS by walking 100 laps of his garden before his 100th birthday. His charitable nature and kindness touched people's hearts and ultimately enabled him to raise an incredible £32million for his chosen

cause - the National Health Service.

Captain Tom was an incredible inspiration to us here and we would like to pay tribute to his amazing outlook, and to thank him for his amazing contribution to the NHS, which has helped both patients and staff across the UK.

Along with donations from Captain Tom, grants from NHS Charities Together have enabled us to purchase picnic benches for staff to



enjoy their breaks outdoors, iPads and covers for patient entertainment and communication with their loved ones, parent food vouchers for our Neonatal unit, plus other items.

## Celebrity support helps raise £4,000 for Trust

We would like to say a huge thank you to Mckala Harrold, 45, from Bilston, for raising £4,000 for our Intensive Care Unit (ICU)!

Every year, Mckala uses the power of social media to create a 'celebrity raffle' on Facebook. This sees her reaching out to different celebrity agencies to ask for support and donations for a charity of her choice. Mckala and her friend Kirsty

Hadlington, invited Danny Miller, also known as Aaron Dingle from Emmerdale, to get involved in her work to support New Cross Hospital throughout the pandemic.

Mckala said: "We chose to support the ICU due to the pressures they were, and are, currently working under. They work extremely hard."

Rachel Robinson, Community

and Events Fundraiser, said: "We are thrilled with the generous donation from Mckala, and thank you to everyone who has supported her fundraising. This will be of great benefit."

Mckala is now fundraising for our Neonatal Unit. You can find out more by visiting her Facebook page called 'Fundraising and Celebrity Random Raffle'.

# Gynaecology Bereavement Room update



Emily Wates, Gynae Bereavement Nurse, raised £750 via her #Gothemile fundraising for the Trust's Early Pregnancy Loss Bereavement Service.

The charity was able to purchase furniture and other items for a Bereavement room in Gynaecology outpatients.

The room, named by staff as 'Buttercup', has now been

fitted with a new yellow sofa and armchair, with accompanying white furniture. A mural of a tree with yellow leaves and birds has been painted using a stencil on one wall. A cabinet has also been donated which holds a LED light-up 'memory tree' for patients and staff to tie a colourful ribbon on.

To ensure visitors to the room are kept refreshed, there is a 'one-cup' hot water dispenser with fully stocked tea, coffee, sugar, milk sachets, stirrers and disposable cup facilities.

Emily said: "This room has been created to provide a comfortable, safe place for

patients and families who have sadly been affected by early pregnancy loss. After being told such difficult news, Buttercup allows us to comfort patients in a separate space where they can take their time and we can openly talk about their experience and support their next steps.

"Whilst we know that nothing can take away the sadness of losing a baby, Buttercup provides a calm and quiet space for patients to take those first difficult steps on their healing journey."

A big thank you to Emily for raising these funds to help benefit her patients.



You could support us by playing the Unity Lottery, where every week you have the chance to win the £25,000 jackpot plus many other fantastic cash prizes.

Support the cause of your choice in three easy steps:

1. Choose a cause to support and pick how many £1 entries you'd like to play each week
2. Click to join online by Direct Debit or Debit Card, or alternatively download Unity Lottery's postal form
3. Fill out your details and click submit, or post your form to Unity Lottery's Freepost address.

For every £1 entry – at least 50p comes directly to us to use, to help us make a real difference to our patients, their families and our staff.

Julie Plant, Senior Matron for Children, Young People and Sexual Health Services, told us how your donations can support her patients: "Coming into hospital can be a distressing and anxious time, especially for children and young people.



This photo was taken pre-COVID-19

"Your vital support helps us to provide those added extras which are important to our families. Your donation

may be used for toiletries for children who are admitted in a hurry, musical medicine to enhance children and young people's recovery or kitchen facilities for parents. It also enables us to give the best possible end of life care to children and young people in their home or preferred environment. Your donation however large or small will be very gratefully received. On behalf of our families and staff, I sincerely thank you."

The draw takes place every Friday! See more by scanning the QR code below:



# Thank you Morrisons, Willenhall

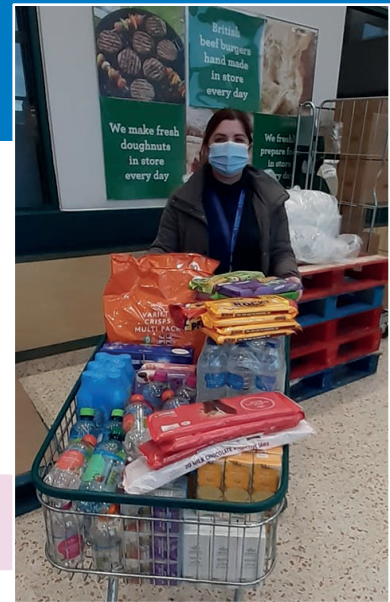
We are very grateful to have received a trolley full of donations from a local Morrisons store, located in Willenhall.

Community Champion of Morrisons Willenhall, Laura Andrews, wanted to support the local community so got in touch with us to donate a trolley of refreshments and

snacks for the hardworking staff at New Cross Hospital.

Rachel Robinson, Community and Events Fundraiser, collected the donations for staff and said: "Thank you so much to Morrisons for this generous act of kindness.

"This will really help to lift the spirits of our staff."



## We need your support

Getting involved and supporting your local hospital and community services couldn't be easier. You might consider attending one of our events or even host your own and help us raise vital funds. Donations can be made in the following ways:

### Direct into bank account:

Bank: Co-Operative Bank  
Sort code: 08-90-19  
Account number: 50101166  
Account name: The Royal Wolverhampton NHS Trust Charity  
Please state the Trust Fund i.e. General Purposes TF

### By post:

Please make cheques payable to The Royal Wolverhampton NHS Trust Charity. Please write on the back of

the cheque which fund you would like to donate to, e.g. General Purposes Trust Fund, and send to; General Office, New Cross Hospital, Wolverhampton, WV10 0QP

### Via payroll giving:

[www.justgiving.com/royalwolvesnhstrust](http://www.justgiving.com/royalwolvesnhstrust)

You can support the Trust Charity on a regular basis from your salary. It's really easy to set up and completely secure, please call us on **01902 695375** for further information

### Are you taking on a personal challenge in 2021?

You could open up your own JustGiving page in aid of the Trust for family, friends and colleagues to sponsor you. Select a charitable trust fund

of your choice for your donations to benefit. We are here to offer advice and support if you need it too.

For more information on how to fundraise for us, visit:

[royalwolverhampton.nhs.uk](http://royalwolverhampton.nhs.uk)

To find out more about how you can support your local NHS Trust or to feature in the next edition, please contact the Charity and Fundraising team on **(01902) 694473** or email [rwh-tr.fundraisingteam@nhs.net](mailto:rwh-tr.fundraisingteam@nhs.net)

