



NHS

The Royal Wolverhampton
NHS Trust

The RWT Charity Newsletter



Making a real difference to the lives of our patients, their families and staff.

Summer 2020



Welcome to the Summer edition

The mission of our charity is to help enhance the care and experiences of our patients and their families. Charitable funds are used to provide additional resources that the NHS cannot provide. They are utilised in a timely manner to ensure that they are applied in the areas that they are needed most.

As ever, we could not achieve what we do without our many supporters and the tireless work of fundraisers, both in the hospital and in our surrounding community and businesses. People who have given time, effort and generosity.

In March we saw a very challenging and unprecedented time within the NHS; the fight against Covid-19. Many of our supporters came together to help raise vital funds or make donations that would make things easier for our patients and staff.

We were overwhelmed by the level of support from the communities we serve; for which we are truly grateful. There are too many of them to thank each and every one of them individually in this edition, however over the next few pages you will see some of the wonderful things our supporters have achieved.

The Caring Pink Charity

A current patient at New Cross Hospital has appealed for donations in order to create cosmetic packages for other patients undergoing treatment within the Deanesly Centre.

Emma Carter, aged 27 from Great Wyrley, was diagnosed with breast cancer in January 2020. One week after her diagnosis Emma decided she wanted to do something positive and give herself a new focus so started The Caring Pink Charity.

Via Instagram and her Just Giving Page, Emma received support from friends, family and her place of work. She has used the money raised so far to create cosmetic packages for patients to receive during their hospital appointments or stay. Some of the items within the packages included face masks, hot chocolate sachets,

word search puzzle books, nail files and wax melts.

Talking about her hopes for The Caring Pink Charity in the future, Emma added: "I would love this to carry on after my treatment and the current parcels have all been given out. I feel it's nice to be nice and help others. I always wanted to work in a healthcare environment and I never did so this is my way of fulfilling my own dreams whilst giving back to others. The fact I'm surrounded by pink and girlie treats is an added bonus."

If you would like to follow Emma's continued fundraising or offer support you can search for her page on Instagram: [@emmacwiththebig](https://www.instagram.com/emmacwiththebig)



Steve Bull Foundation



Wolves legend Steve Bull continued to support staff and patients of the Trust throughout the Covid-19 pandemic.

The Steve Bull foundation has sourced and donated many items of Personal Protective Equipment (PPE), including some 300 visors, more than 100 sets of scrubs, 100 anti-bacterial bags from Stafford-based company Addmaster for Trust staff to place scrubs in and 150 FFP3 masks.

In addition, the legendary goalscorer's Foundation has supplied stationery, hand creams, lip balms, and helped keep staff refreshed by supplying packs of tea and coffee, water and snacks.

Steve said: "We have all been affected by this crisis and, from day one, my foundation has sought to help those on the frontline and all of the staff, who all do such a brilliant job. We have made all sorts of donations to the people who have put their lives on the line on a daily basis to help the fight against coronavirus and we will continue to do whatever we can to support our local hospitals."



Countrywide Properties Plc donated £7,500 to the Trust

A leading mixed-tenure developer specialising in place making and regeneration, has donated £7,500 to The Royal Wolverhampton NHS Trust General Purpose Trust Fund. Countrywide Properties Plc made this donation as part of a £50,000 donation from its Communities Fund to 10 local organisations in the West Midlands - in and around locations that it is

currently building new homes. The Countrywide Communities Fund has been established to support local charities, food banks and organisations providing essential local services. Since launching last month, Countrywide has allocated over £500,000 to causes close to the heart of its regional teams. Adam Daniels, Managing Director, Partnerships West Midlands,

Countrywide, commented: "We are committed to investing in our communities and now more than ever they need our support. The ongoing coronavirus pandemic has made life far more difficult for many local people and charities who rely on donations. On behalf of myself and the rest of the team, we hope these funds will help these charities continue their vital work."

Fundraising news in brief

Temple donates £10,000 to the Trust

Worshippers from a Hindu temple in Wolverhampton have donated £10,000 to The Royal Wolverhampton NHS Trust following a collection during the COVID-19 crisis. The Shree Krishan Mandir Hindu temple on Penn Road in Penn Fields have collected the donations from their congregation in less than two months following an appeal to their members.



Wendy Platt supported staff from Tesco Express Bushburys' fundraising by having her head shaved. Wendy raised £100!

Budding artist Aditi Arvind Mandal, 10 and the daughter of Dr Kasturi Nanda Mandal Consultant Haematologist is raising funds in aid of RWT. In exchange for a donation to her local NHS Trust, Aditi will paint or draw an image of your choice. For further information, please go to her Just Giving page, where you will see more of her art work. <https://bit.ly/2zKAPgY>



Teenager Jaikiret Singh has generously donated £501 of his 18th birthday money to The Royal Wolverhampton NHS Trust. When asked what influenced his decision to make this donation, Jaikiret said: "Staff in the NHS are our heroes."



NHS' 72nd birthday

On 5th July the NHS turned 72 years old and we asked our supporters to complete 72 miles in aid of their local NHS Trust to help raise vital funds. Thank you to everybody who signed up for the challenge - people completed their miles by cycling, walking, and running, while one member of staff rode their horse.

More than 2,000 miles were completed by members of the local community and staff at The Royal

Wolverhampton NHS Trust and to date we have raised £5,312.95, with donations still coming in.

The Charitable Funds Committee works closely with the Trust to identify projects that will further enhance patient care and experience whilst also looking after our staff. The Charity team used this time as an opportunity to look back and reflect on some of projects that we would not have been able to complete without the wonderful support from our supporters.



Six years' ago

Thanks to a large, single bequest from an individual donor to the Wolverhampton and West Midland Counties Eye Infirmary League of Friends, the Trust was presented with a Complete Virtual Reality Simulator.

The machine, costing £149,000, was the first of its type to be used by West Midlands ophthalmology trainees who will come from across the region including Birmingham, Coventry, Burton-on-Trent and Stoke-on-Trent. It provides an experience of cataract surgery in a safe environment and without putting a patient at risk, helping them develop hand-eye co-ordination and teaching them how to use an operating microscope.

Five years' ago

Thanks to the Maureen Parkes Breast Care Fund we were able to purchase a sentinel lymph node probe. The probe reduces the risk of most operative problems such as swelling in the body tissues pain and numbness, thus reducing patient's discomfort and improving their experience throughout treatment.



Four years' ago

Five colleagues from The Royal Wolverhampton NHS Trust successfully completed four half marathons in five months and raised £3,289.40 in aid of the neonatal unit at New Cross Hospital.

Dean Murphy, Dave Hodgetts, Chris Pratt, Adam Sharratt and Luke Ratcliffe ran the Lichfield Marathon, The Birmingham Black Country, Wolverhampton and the The Birmingham Great Run. Funds raised were used to improve the parental flats and enhance support and training to parents via the STORK programme.



Tesco Fundraising

Thank you to the colleagues and customers of Tesco for their support throughout the pandemic. Area Manager Kevin Twynholm pledged the support of all thirty of his Tesco Express stores across the West Midlands to follow in the footsteps of their colleagues at Tesco Express Bushbury and help raise funds.

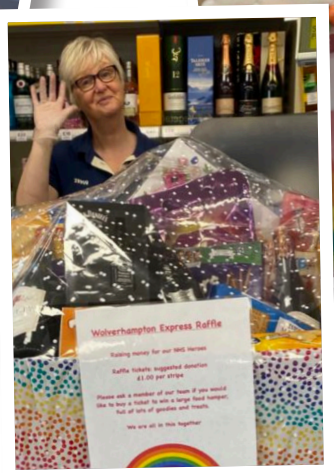
From dress up days to raffles, colouring competitions and cake sales, all of the store teams went above and beyond to help raise vital funds to help RWT.

Their combined efforts resulted in a total donation of £15,638 to help patients, their families and staff at the Trust. Kevin said "On a daily basis we would hear stories from customers and colleagues of how Covid-19 was affecting them and their families. We just wanted to do something and see how much money we could raise for the Trust so you can continue to provide such great support for everyone in Wolverhampton.

It's been amazing to see the efforts Tesco colleagues across my group have gone to raise money and the generosity of our customers to support the NHS.

Stores in Gornal, Penn Road, Birches Barn and Bushbury raised over £1,000 and top store was Tesco Express on Bromley Lane, Kingswinford. Vicky and the team raised over £2,000 which was an extraordinary amount!

Leanne Boord, Fundraising Coordinator at the Trust said "Thank you to Kevin, his colleagues and Tesco customers throughout the region for helping to raise such a substantial amount. This is another shining example of how the local community pull together to support their local NHS Trust".



Bear sales for Wobble Room

DME Fitness Ladies, who have classes in Penn, Wombourne and Kingswinford, have donated £800 to New Cross Hospital, split equally between the wobble room and the Accident & Emergency Department. Money raised will go towards funding essentials in the two rooms. DME have also donated £800.

The funds were pledged to win ten handmade bears, knitted by Sandra Eccleston, 75, the mother of Donna Eccleston, who runs DME and who christened them 'Dr Teddy Bears'. Tickets were sold at £2 each with an initial aim of raising £100. The first bear was won by June Checketts from Penn but after the success of the first one, Sandra has continued to knit and made around ten bears for the NHS, with each raffled off. Another Dr Teddy Bear was given to Trust staff member Toni Parker to raffle for the A&E children's room. The bears – complete with scrubs – range in size from around 12 inches high to two feet tall.

Donna, 51, from Wombourne, who teaches traditional aerobics, dance, pilates, combat and circuit training, said: "We normally decide to raise money for something close to our hearts and this time my wonderful ladies wanted the funds to help in local hospitals. DME Fitness Ladies are proud to support the staff at New Cross Hospital who have fought the coronavirus pandemic. We send thanks to all frontline NHS staff. Not all super heroes wear capes – some wear scrubs! Initially we thought we'd raise £100 but some people were pledging £100 alone and it just took on a life of its own. They are an incredible bunch of ladies."

'Not all super heroes wear capes – some wear scrubs!'

The wobble room is situated in the West Midlands Institute at New Cross Hospital and is a safe space for staff to unwind, 24-7. Kay McLoughlin, Staff Health and Wellbeing Project Coordinator, said: "During such an uncertain time it has been amazing to see the countless acts of kindness and donations for the Trust. The generous donation towards the wobble room has been a tremendous help and will ensure staff continue to have a private space to maintain their mental wellbeing."



Unity Lottery

Unity is a weekly lottery - for every £1 that one of our players pays into the lottery draw, 50p will go directly to The RWT Charity. **There is a top prize of £25,000 each week**, along with smaller prizes of £1,000 and £25. For just £1 per week you will be allocated with a six digit Unity Lottery number, which will remain yours for as long as you wish to keep playing. You can purchase more than one number if you wish.

Every Friday, the lucky winners are selected at random and prize cheques issued and posted directly to you, so there is no need for you to claim. Winners have to match 3, 4, 5 or all 6 digits of the winning number in the correct place in the sequence.



For further information or to join up, please go to:

www.unitylottery.co.uk/causes/the-royal-wolverhampton-nhs-trust-charity/

We need your support

Getting involved and supporting your local hospital and community services couldn't be easier. You might consider attending one of our events or even host your own and help us raise vital funds.

Donations can be made in the following ways:

Direct into bank account:

Bank: Co-Operative Bank Sort code: 08-90-19

Account number: 50101166

Account name: The Royal Wolverhampton NHS Trust Charity

Please state the Trust Fund i.e. General Purposes TF

By post:

Please make cheques payable to The Royal Wolverhampton NHS Trust Charity.

Please write on the back of the cheque which fund you would like to donate to, e.g. General Purposes Trust Fund, and send to; General Office, New Cross Hospital, Wolverhampton, WV10 0QP

By a donation on our 'Just Giving' site: www.justgiving.com/royalwolvesnhstrust

To find out more about how you can support your local NHS Trust or to feature in the next edition, please contact the Charity and Fundraising team on **(01902) 694473** or email rwh-tr.fundraisingteam@nhs.net