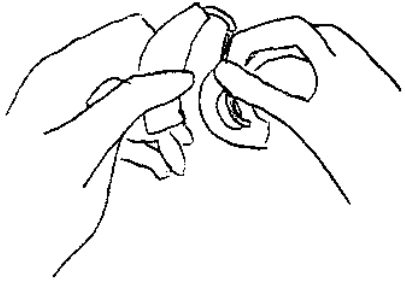


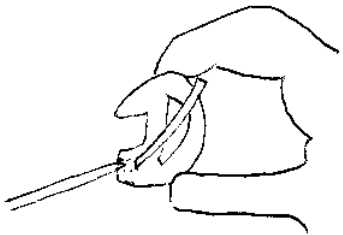
Washing the Mould - Once a Week

1



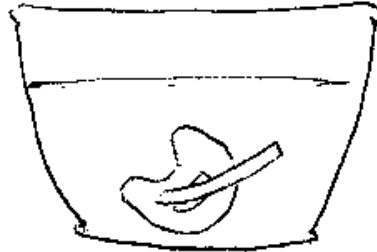
Pull the mould and hearing aid apart where the tube joins the elbow. There is no need to remove the tube from the mould.

2



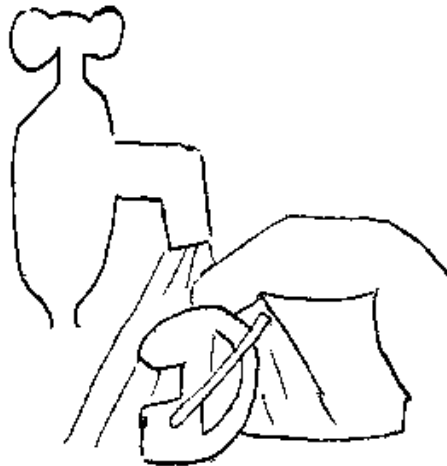
Use a needle or pipe cleaner to remove any obvious obstructions from the mould

3

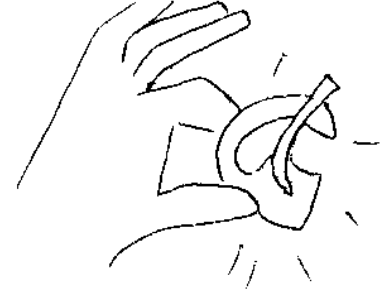


Soak in some warm soapy water (washing up liquid is OK) and clean using a small brush. **DO NOT** use hot water as this may damage the mould and tube

4

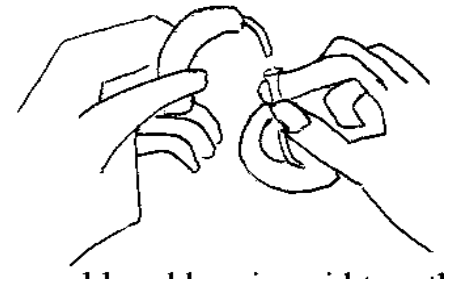


5



When mould is clean, blow down the tube to remove bubbles and leave to dry overnight.

6



Push the mould and hearing aid together. Ensure that the curve of the mould matches the curve of the hearing aid.

If you find washing the mould too difficult, just wipe it with a damp cloth without removing it from the aid.

KEEP THE HEARING AID

DRY

Hearing Services Department
West Park Rehabilitation Hospital
Park Road West
Wolverhampton
WV1 4PW

If you require this leaflet in a different format i.e. larger print, please contact:



Telephone: 01902 444055

Available from 8am-17:00pm



Fax: 01902 444056



Email: rwh-tr.hearing-services@nhs.net

APPROVED DATE: APRIL 2013
RATIFICATION DATE: DEC 2013
REVIEW DATE: APRIL 2018
Reference Number: PIL 7

Washing

Your

Earmould

The Royal Wolverhampton 
NHS Trust